

A PROFESSIONAL MOLDED RUBBER AND PLASTIC MANUFACTURER FOR THE AUTOMOTIVE INDUSTRY

Our Company manufactures a wide range of Molded Rubber Products for automobiles and motorcycles. The range includes rubber seals, pedal pads, cushions, rubber steps, isolators, rubber plugs, rubber bushes, rubber sheets and other products used in automobiles.

RUBBER AND PLASTIC PARTS FOR CARS

Brake and Clutch System

Pedal pads: a brake pedal with high elasticity has good resistance to abrasion.

Rubber bushes & cap bleeders are brake components made of EPDM rubber with high tear, weather and heat resistance.



Battery

Rubber seals in car batteries are made to work in contact with acidity as well as distilled water while retaining their high tensile strength.



Air Conditioning & Engine Cooling System Parts

Bushes/grommets in air conditioning & engine cooling systems is used as vibration absorber with a good compression set or to prevent dust and water penetrating into the passenger area.



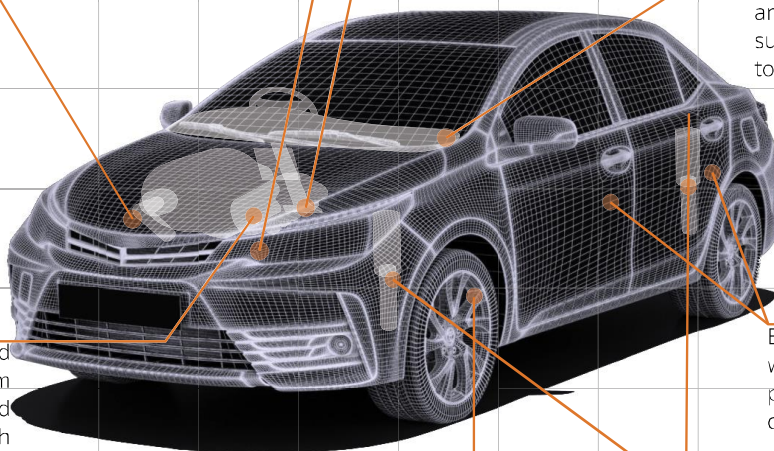
Rubber parts For Interiors and Console Panels

Interior part is made according to Grain : GR028 specification and each component has been successfully tested with regard to flammability.



Assembly Parts

Rubber-metal bonded parts for the brake system and rubber assembled with other materials such as plastic and steel are used in automotive air-conditioning and brake & clutch systems.



Body parts

Body parts are designed to withstand the high impact potentially occurring between other components.



Injection Plastic Parts

Injection Plastic Parts for cars and motorcycle.



Rubber bushes

Rubber bushes can endure high impacts inside the shock absorber system.

Quality System



ISO 9001:2015
Head Office Certificate No. 1031777/A/0002/UK/En
Automotive Certificate No. 1031777/AA/0001/SM/En
Compound Certificate No. 1031777/A/0002/UK/En



IATF 16949:2016
Certificate No. 1031777/AA/0001/SM/En



ISO 9001:2015
Certificate No. 111049/A/0001/UK/En



ISO 13485:2016
Certificate No. 111049/B/0001/UK/En



UKAS
Quality Management System
Certificate No. 48012482



skpolymer.com

RUBBER AND PLASTIC PARTS FOR MOTORCYCLES

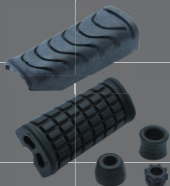


Rubber bushes endure high impacts inside the motorcycle front shock absorber.

Absorption rubber parts are located between metal handles and other materials to reduce noise.



Rubber bushes endure high impacts inside the motorcycle rear shock absorber.



Motorcycle footrests are designed to have good resistance to environmental influences such as exposure to sunlight, ozone and rain.

Rubber protectors are a part of the motorcycle's exhaust system and must therefore be able to withstand high temperatures.



WHY S.K. POLYMER



Vertical Non-Contact Measuring System for high precision and efficient samples dimension checking process.

- ISO IATF 16949
- Shared Values in Quality, Cost, Delivery and Attitude
- Quality and RFQ responses within 24 hrs
- R&D team in Formulation Research, Mold Design and Process Design



Contact us:

Top Management
Sales & Marketing Dept.
Quality Dept.
Factory Dept.

apiluck@skthai.com
aor@skthai.com
ratha@skthai.com
padermchai@skthai.com

AKABONO

TOYODA GOSSEI

Nitto

YOROZU

YOROZU

SAB

Honda Lock

TRIUMPH

YNP

MITSUBA

HANON SYSTEMS

SAINT-GOBAIN

Superward

SMITHS

TRAD

ASTCO 1996

Pioneer

SAINT-GOBAIN

GS

SANOH

www.skpolymer.com

S.K. Polymer Co., Ltd.
64 Bang Kradi Road, Samaedum,
Bangkhunthian, Bangkok, Thailand 10150
E-mail : sales@skthai.com Tel : (66)2 892 1092 up to 7

